

Woodland High School Band

Bass Clarinet

Audition Requirements:

Students interested in auditioning for one of the advanced bands (Symphonic Band or Wind Symphony) are encouraged to do so. Auditions will take place Monday, April 16th from 4:00-8:30pm. The following items should be prepared for the audition:

1 Prepared excerpts

- Two etudes are provided. Students auditioning for Symphonic Band should only play the first etude, or first portion as marked. Students auditioning for the Wind Symphony are required to play both etudes.

2 Memorized Major Scales & Chromatic Scale

- Play as many major scales (in the order listed below) and arpeggios as you can in 2 minutes (memorized). If you finish all major scales with time remaining, you may perform minor scales for “extra credit”.
- All scales must be played in the “All-State” format (see attached scale sheet). You will receive one point for each octave ascending and descending and one point for the arpeggio as a whole. For example, a two octave scale is worth 5 points (1 point for each ascending octave (2), one point for each descending octave (2), and one point for the 2 octave arpeggio (1)).
- Scales should be played in the following order (without skipping around). This is also the order in which the scales are written on the attached scale sheet(s):
- CONCERT PITCH: G C F Bb Eb Ab Db Gb B E A D
- Chromatic scale: In order to receive full credit (all 10 points), the chromatic scale should be performed within the following range. Tempo in 8th notes at minimum of 120 bpm.
 - Flute: 3 octaves from Low C to High C
 - Oboe: Low Bb to High D
 - Sop. Clarinet: Low E to High G above High C
 - Bass, Contra Cl.: Low E to High C
 - Bassoon: 3 octaves from Low Bb
 - All Saxophones: Low Bb to High F
 - French Horn: Low F to High A
 - Trumpet, Baritone T.C.: Low F# to High C
 - Trombone, Baritone B.C.: Low E to High Bb
 - Tuba: Low E to High Bb

3 Sight-Reading

- You will perform 2 sight reading exercises. One will be a rhythm that must be performed with a metronome and one will be a “normal” sight-reading that includes both melodic and rhythmic elements.

Audition Weighting:

Each element of the audition will be weighted as follows:

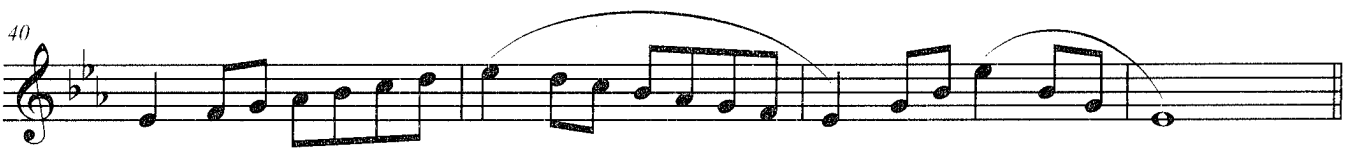
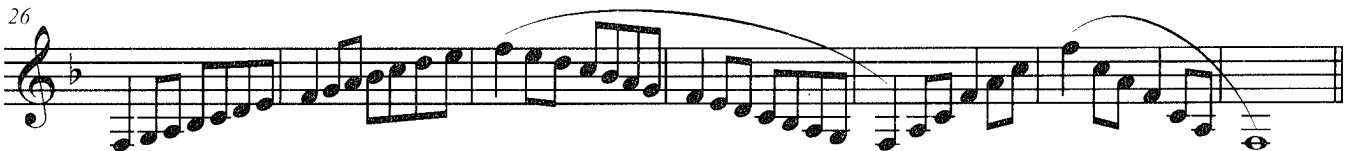
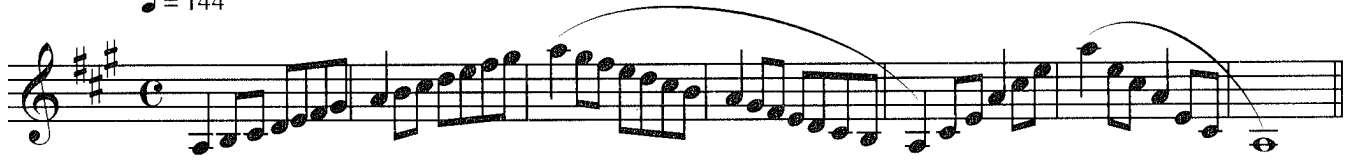
Scales – 40% (30% major scales, 10% chromatic scale)

Etudes – 30% (15% for each etude)

Sight-Reading – 30% (15% for each sight-reading exercise)

GEORGIA MUSIC EDUCATORS ASSOCIATION
ALL-STATE BAND SCALES
SYMPHONIC BAND (GRADES 11-12) B \flat BASS CLARINET

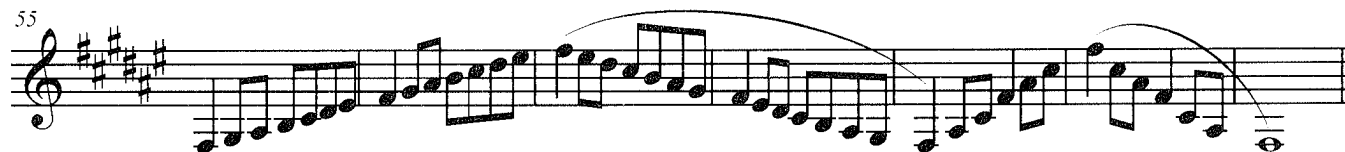
$\text{♩} = 144$



51



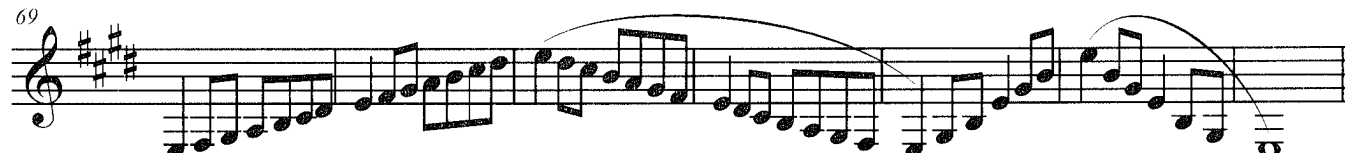
55



62



69



Lyrical Etude

Bass Clarinet

Please be as musical as possible and feel free to add phrase shaping, dynamics, and other expressive devices

♩ = 80

Cantabile

5

9

13

Technical Etude

This etude is to be played by those interested in being placed in Symphonic I or Wind Symphony.

Allegretto (Quarter=104)

